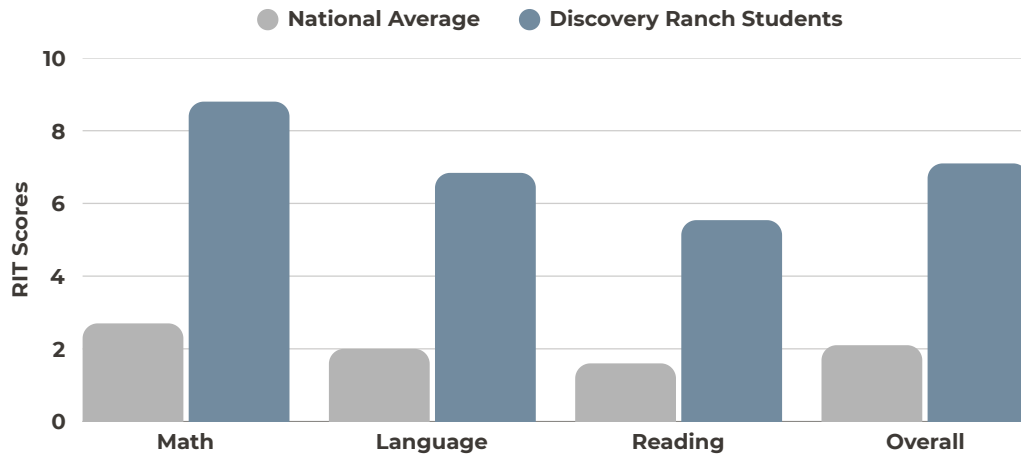


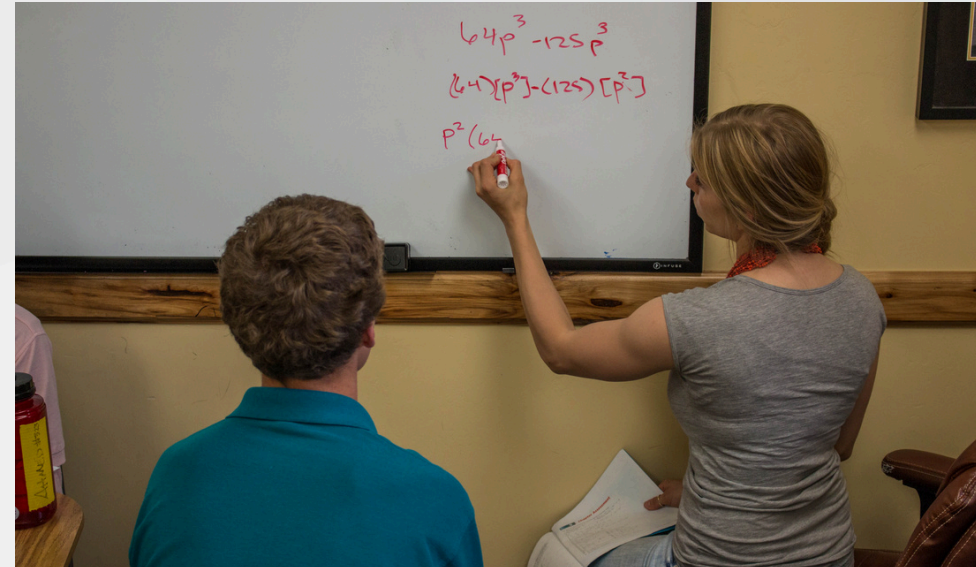
Achieving Academic Excellence at Discovery Ranch

2025 School Year Average Change in Student RIT Scores
(Measures Academic Progress on a Nationally Normed Test)



How are our students making so much academic progress?

Our students benefit from a dynamic and engaging curriculum, small class sizes allowing for personalized learning, and talented and caring teachers in the classroom with them each day.



Why is academic growth so critical in a residential treatment setting?

Many students come to us significantly behind in school and in academic ability due to emotional and/or mental health struggles. It is critical that your student receives top-notch academic instruction so they can catch up to their peers.

How do you measure academic growth?

Academic growth is measured using the NWEA MAP Growth standardized test, covering math, reading, and language usage. The change in RIT score shows that our students are getting more than a year's worth of growth compared to the national norm. Testing occurs within 30 days of program entry and around 10 months later, mirroring a standard school year for effective growth assessment.

<p>Math</p> <p>Students at Discovery Ranch made 3x's more growth on their math scores than the national average between the 2023 -2025 school years.</p>	<p>Reading</p> <p>During the 2023-2025 school years, students at Discovery Ranch scored 3x's higher on their reading scores than the national average.</p>
<p>Language</p> <p>Students at Discovery Ranch made 3x's more progress on their language scores than the national average between the 2023 -2025 school years.</p>	<p>Overall</p> <p>Students at Discovery Ranch made over 3x's more growth on their overall RIT scores than the national average between the 2023 -2025 school years.</p>



Visit DiscoveryRanch.net or scan the QR code to learn more.